

PRODUCT SPECIFICATION

FIBRESCREED RECESSED REPAIRS

A flexible repair for concrete & asphalt surfaces

For the treatment of severe cracks in highways and aircraft pavements

Fibrescreed

The patented Fibrescreed range of materials and systems offers various solutions to a wide range of pavement and carriageway defects.

The vast majority of failures on highways and aircraft pavements originate from cracks and joints which are allowed to remain untreated for extended periods, allowing water and salts to penetrate leading to the rapid deterioration of the surfaces and more extensive sub-base failures.

Prismo's Fibrescreed range of polymer modified bitumen based sealing compounds incorporate chopped metal and glass fibres, rubber granules and granite aggregate. These compounds are manufactured under strict factory conditions thus ensuring consistent quality and avoiding operator error as often experienced with 'on-site' mixing methods.

Prismo Contracting Services offer a complete service from the initial inspection of site, advice on correct specifications, through to the carrying out of work under control of fully trained supervisors and operators.

Fibrescreed materials and systems have the following advantages:

- Highly ductile able to cope with most crack and joint movements,
- Unique composition incorporating rubber granules thereby increasing load bearing capabilities,
- Excellent recovery under varying temperatures,
- Impervious to water and salts thus arresting further deterioration,
- Fast installation minimising costly traffic management,
- Good skid resistant finish,
- Improves ride quality of surface,
- Can be installed throughout the year,
- Economic and cost effective.

Recessed Repairs

Recessed Fibrescreed RC100 has been developed as a repair for areas where severe cracking has occurred in both highways and aircraft pavements where low volumes of traffic are experienced (RC100A grade is suitable for high traffic volumes).

RC100 is available in black or fawn (pigmented to produce a colour suitable for concrete repairs), both are high quality, hot applied bitumen based polymer modified compounds reinforced with chopped fibres, 3mm rubber granules and granite aggregate.

THE PRISMO RANGE OF REPAIR AND MAINTENANCE TREATMENTS:-

Matrix

Fibretext

Fibrecrete

Zebradec CPS

Fuel Seal

Overband Sealants

Crack/Joint Sealants

Kerb-edge Sealants

Stress Absorbing Membrane

Interlayer

Prismo

**The Prismo
Advantage**



A Jarvis plc Group Company

PRODUCT SPECIFICATION FIBRESCREED RECESSED REPAIRS

(continued)

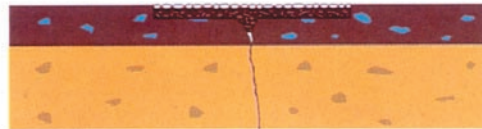
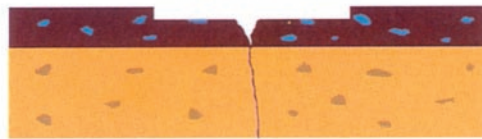
The hot applied RC100 completely fills and seals all the joints and cracks simultaneously with the formation of a stress absorbing membrane. The installed membrane reduces the horizontal strain applied to the asphalt overlay while maintaining the load bearing properties.

Typical Applications

- Reflective cracks in black top overlays and veneer surfaces,
- Repair of joints and cracks in concrete carriage-ways and pavements,

Benefits

- Cost effective answer to the problems of severe cracking,
- Fast efficient application reduces costly traffic disruption,
- Excellent adhesion to both cement and bitumen bound substrates,
- Recess ensures a controlled depth of material and provides a uniform riding surface,
- Provides an effective flexible repair which arrests further deterioration.



Application

Using a mechanical planer the surface is milled out to a width determined by the extent of the defective area and a depth of up to 20mm. The recess is then cleaned and dried using hot compressed air to thoroughly prepare the surface, removing all debris and loose material. Fibrescreed RC100 compound is immediately poured and screeded to fill the recess and overlap the edges. Whilst the compound is still molten, pre-heated high PS.V. aggregate is applied to the surface.

RC100 Specification			
Test Method	Requirement		
	RC100 (black)	RC100 (fawn)	RC100A (black)
Traffic Volume	Low	Low	High
Mandrel Test (180°C Bend, 23°C)	Pass	Pass	Pass
Cone Flow Test (70°C, 3 hours)	10% maximum	10% maximum	10% maximum
Density	1.3 – 1.5 kg/litre	1.3 – 1.5 kg/litre	1.6 – 1.8 kg/litre
Compression Resistance (10mm per minute, 23°C)	300 N minimum	400 N minimum	400 N minimum
Extension Test (1mm per minute, 23°C)	750 N maximum 90% minimum	750 N maximum 50% minimum	750 maximum 100% minimum
Aggregate Content	30%	40%	40%
Skid Resistance	55 - 70	55 - 70	55 - 70



The Prismo Advantage

The Fibrescreed range of material can used as 'rout & seal' and 'infill' repairs. See separate sheets for further details.

For countries overseas alternative Fibrescreed materials have been formulated to cope with extreme climates.



A Jarvis plc Group Company